

# HAWAII'S PROGRESSIVE AUTO GLASS TINTING LAW:

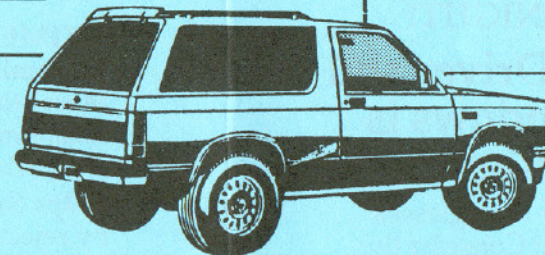
**HISTORIC LEGISLATION:** On July 14, 1983 Governor George Ariyoshi signed Hawaii's new tint law into being. This landmark bill defines what kinds of tint can be used and where they can be applied.

**PROTECTION AND SAFETY:** The principle benefit was to provide motorists with protection from the intense Hawaiian sun while maintaining safe levels of visibility for all. Combined with new high-tech light meters, this legislation will allow you to safely enjoy the comfort, safety and security of auto glass tinting.

**20% TRANSMISSION**  
or darker allowed on rear  
sides and rear window; 20%  
not permitted on front side  
windows.

**35% TRANSMISSION**  
or lighter on driver and  
passenger windows.  
No 20% allowed.

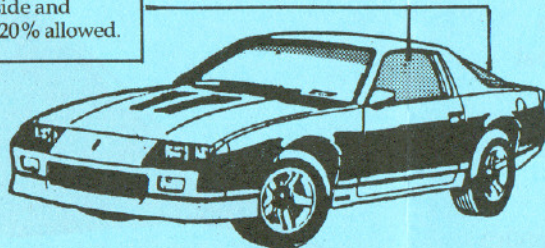
**2 Outside Mirrors  
Required;**  
1 on each side.



**TRUCKS: 35% TRANSMISSION ON DRIVER AND PASSENGER WINDOWS; 20% TRANSMISSION ON REAR SIDE AND BACK WINDOWS.**

Driver and passenger windows must be tinted no darker than passenger cars (35%). Back side and rear windows can be tinted as dark as desired because some truck and van utility bodies have no side or back windows. **Two outside mirrors must be mounted.**

**35% TRANSMISSION**  
or lighter tint on side and  
rear windows; no 20% allowed.



**CARS: 35% TRANSMISSION ALL 'ROUND**

Basically, the Driver's and Passenger's windows of *any* kind of vehicle must *pass* (transmit) a *minimum* of 35% available light. (65% of the light is blocked.) Passenger Cars must have 35% Transmission (or lighter) film on the side and rear windows. (See Front Windshield at right).

**ENFORCEMENT:** Annual light meter inspection at time of Safety Check. State law allows 35% (+/- 6%): Net reading no lower than 29% light transmission. Persons found to have illegal tint will not pass Safety Check.

## FRONT WINDSHIELD

ANY % Transmission may be applied at the top of the windshield down to the AS-1 mark. No tinting is allowed below this point. Vehicles without AS-1 can be tinted down to 4" from the top center.

